

SMART PROGRAM

AT A GLANCE

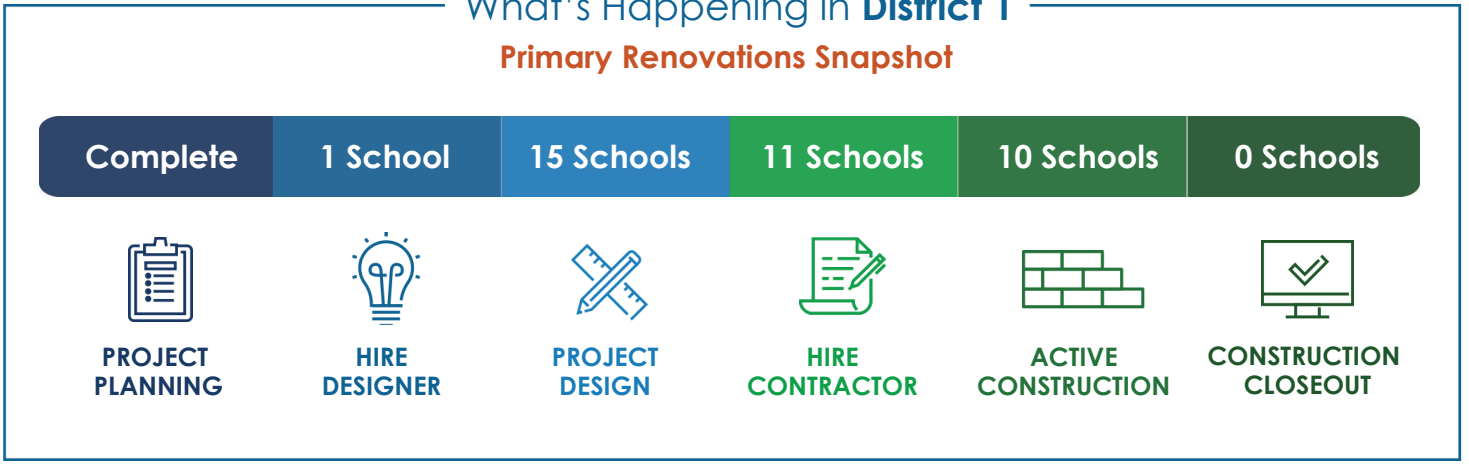
PUBLISHED OCTOBER 2019

DISTRICT 1



What's Happening in District 1

Primary Renovations Snapshot



Data through September 2019

DISTRICT 1

SMART PROGRAM AT A GLANCE

The SMART Bond Program focuses on improving schools and the educational experience of students and faculty at 232 SMART funded Broward County Public Schools, in the overarching categories of Safety, Music & Art, Athletics, Renovation, and Technology.

NEWLY IN CONSTRUCTION

Primary Renovation projects that received approval to begin construction.

- Gulfstream Academy of Hallandale Beach Pre K-8
- Hollywood Hills High School

FEATURED RENOVATIONS



COLBERT MUSEUM MAGNET

The contractor recently mobilized and created a perimeter around the walkway in anticipation of work scheduled to begin for Building 8.



MIRAMAR ELEMENTARY SCHOOL

Roofing improvements are nearly complete on all four buildings. In addition, the chiller behind Building 5 has been replaced and will provide cooling for the cafeteria and surrounding classrooms.



MCNICOL MIDDLE SCHOOL

The music room is complete. New A/C condenser piping has been installed for the cooling system. New water and condenser pumps have also been completed in Building 1.



FEATURED RENOVATIONS (contd.)



**GULFSTREAM
ACADEMY OF
HALLANDALE**
K - 8

The administrative offices in Building 1 are being renovated, and a classroom in Building 7 is being divided into two. A water main is also being installed for a new fire sprinkler system.



ANNABEL C. PERRY
Pre-K - 8

Wiring for fire alarm upgrades have been installed and roofing improvements for Buildings 2 and 4 are making progress.



SCHOOL CHOICE ENHANCEMENT PROGRAM

As part of the School Choice Enhancement Program (SCEP), schools are allocated \$100,000 to spend on custom improvements to their campuses and curriculums.

SCEP DISTRICTWIDE

38 Schools underway or complete

14 Schools Complete

17 Schools in Implementation

7 Schools in Planning/Design

SPOTLIGHT ON SCEP



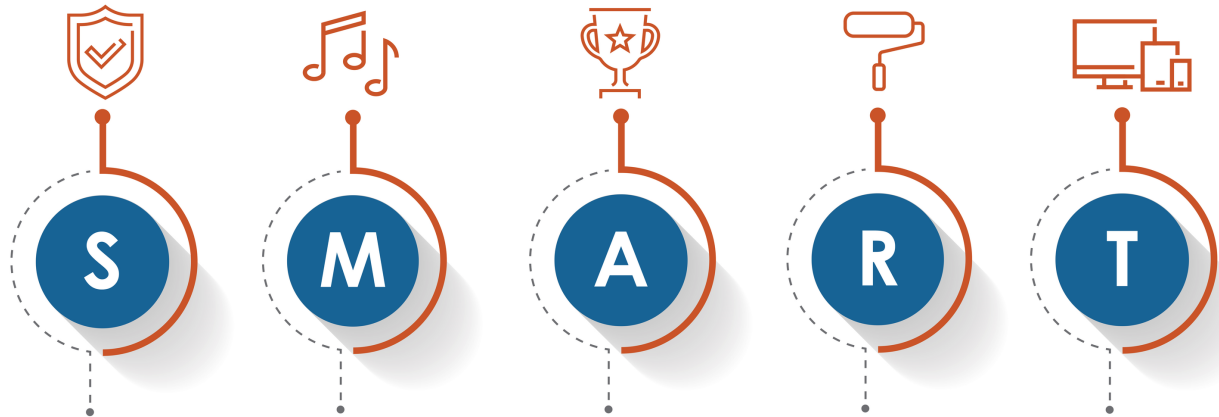
SOUTH BROWARD HIGH SCHOOL

Items Purchased Include:

Projectors and auditorium sound system



SMART by the Numbers | **District 1**



Safety

COMPLETE

\$26 million invested in Single Point of Entry projects

Music & Art

7,806

items delivered valued at \$2 million

Athletics

COMPLETE

3 Tracks
4 Weight Rooms

Renovation

10 Schools in construction
223 SCEP Items delivered and installed

Technology

COMPLETE

11,670 items delivered



STAY INFORMED

www.browardschools.com

VISIT

BrowardSchools.com/SMARTFutures

EMAIL

SMARTFutures@BrowardSchools.com

FOLLOW US!

@BCPS_SMART

/BCPSSMART

@BCPS_SMART

**10 SCHOOLS
IN CONSTRUCTION**

- **Annabel C. Perry Pre K 8 School**
- Apollo Middle School
- Attucks Middle School**
- Beachside Montessori Village
- Boulevard Heights Elementary School
- **Colbert Museum Magnet**
- Collins Elementary School
- Dania Elementary School
- Driftwood Elementary School
- Driftwood Middle School
- **Gulfstream Academy of Hallandale Beach K 8****
- Gulfstream Early Learning Center of Excellence
- Hallandale Magnet High School
- Henry D. Perry Education Center
- Hollywood Central Elementary School
- Hollywood Hills Elementary School
- **Hollywood Hills High School**
- Hollywood Park Elementary School
- **Lake Forest Elementary School**
- Lanier-James Education Center
- Mary M. Bethune Elementary School
- McArthur High School**
- **McNicol Middle School**
- **Miramar Elementary School**
- **Oakridge Elementary School**
- Olsen Middle School
- Orange Brook Elementary School
- Pasadena Lakes Elementary School
- Pembroke Pines Elementary School
- Sheridan Hills Elementary School
- Sheridan Park Elementary School
- Sheridan Technical College
- South Broward High School
- Stirling Elementary School
- **The Quest Center**
- Watkins Elementary School
- **West Hollywood Elementary School**

*Bold schools are in construction

**Projects are sometimes separated in order to expedite timing. This may lead to a school being counted more than once in phase tracking.